

bradley News

Friday, May 14, 1976



OLD TIMER OF THE WEEK

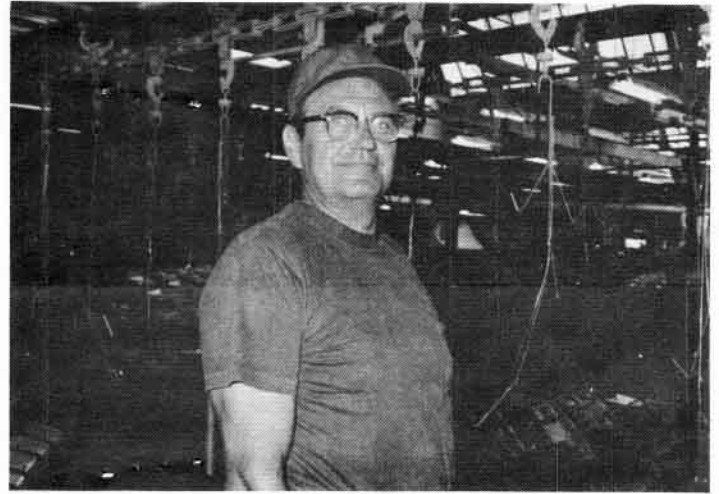
This week's honored employee is EVERETT REED, who was born and raised in the Essex area, attended Gardner High School and spent almost two years as an explosives operator at Sanderson & Porter before coming to work at Bradley on February 28, 1944. He was nineteen years old at the time. His first assignment was in the Grinding Room, but for years he was in Dept. 10 as a Press Operator and Degreaser Operator. In February of this year he transferred to the new Dept. 20, where he is now Powder Metal Operator on the second shift.

EVERETT's first marriage ended in divorce after eighteen years. There are two sons from that marriage; JAMES, who works at Reed's Rental and JOHN, who works here in Assembly. Seven years ago he married his present wife LOUISE, who is the sister of LEO and BOB WILLIAMSON. He also acquired three stepsons, two of whom, LARRY and LYLE MANNY are employed here.

This OLD TIMER, who says he has enjoyed his thirty two year Bradley Career is a fishing and hunting enthusiast. He is one of the many Roper employees who make the trip to Wolf River, Wisconsin each spring to fish for white bass. However, the once in a lifetime event he is looking forward to this year is a trip to Hawaii.

WISCONSIN DELLS

With vacation time getting ever closer, the promoters are really making a pitch for the dollars of our employees. In addition to the aforementioned Six Flags and Opryland promotions, we have since received cut rate tickets for attractions at Wisconsin Dells and Circusland in Florida. Any employees interested in these tickets may just pick them up from BETTY MARSHALL in Personnel.



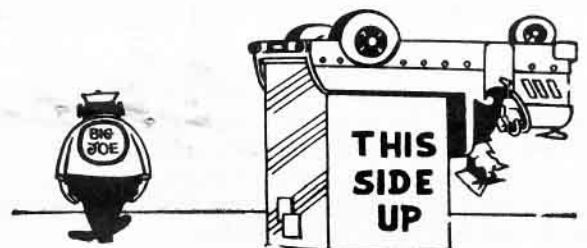
RETIREE

Friends of JOHN KISIEL, will be pleased to hear that his application for retirement on a total and permanent disability basis has been recently approved. As a result, he is now officially retired at the age of 53 with 33 years of service. JOHN, who has been on a leave for health reasons, for an extended period, spent most of his career on the Paint Line and during his entire career was known as an excellent employee.

JOHN's number one project during his retirement will be to try to regain his health and we all join in wishing him success. All his friends wish for him a long and happy retirement.

BIRTH

Congratulations to GARY, Print Shop, and Deanna TAYLOR on the birth of their second child, a boy, Blaine, born May 11, 1976.





THE MAKING OF A TRACTOR

PART IX DISTRIBUTION AND WAREHOUSING CONCLUSION

In preceding installments of this series, we have shown how the making of a tractor proceeded from the planning stage through many other stages and processes to a finished product. Once the finished tractor reaches the end of the line it is placed in a carton and then the Traffic Department takes over. Checkers then control the loading and the actual loading, either in box cars, trucks or piggyback, is done by fork lift operators. In the picture, Fork Driver AMOS WILKING is shown as he loads a tractor in a railroad car.

In 1974, a total of 50,000,000 pounds of finished products were shipped from this location. As an indication of how we were affected by the economy, in 1975, the figure dropped to 30,000,000 pounds. Approximately 68% of all we ship goes by rail with the other 32% by truck or piggyback. Since piggyback is a combination of both, it is probably safe to say that better than 75% overall goes by rail. Most of the tractors and attachments shipped from here go to Sears Mail Order Houses or Retail Distribution Centers.

The preceding figures were furnished us by Traffic Manager, ROGER BECKMAN, who also gave us the following information. During the last two years over 70,000 tractors were manufactured and shipped from Bradley: 43,495 in 1974 and 27,311 in 1975. Historically, since tractor sales are geared to the spring season over 60% of our shipping is done in the first four months of the year. As a result the traffic department each year is faced by two major problems. The biggest problem is the large supply of equipment (railroad cars, trucks and piggybacks) needed in a period of just a few months. The second biggest problem is that of finding warehouse space during the peak months. Because of the seasonal aspect of the work, the department fluctuates in manpower from a maximum of 30 people to a minimum of about 12.

This is the concluding installment on the "Making of a Tractor". Our purpose in running the series was to give those employees whose jobs happen to be just a small part of the whole picture a realization of just how many people's efforts go into the making of a tractor. We hope this has been accomplished.

LADIES GOLF

JANET POWER led the Roper Ladies Tuesday night by shooting a gross score of 54. Leaders in net scoring were:

Delma Burkhalter	56-33
Kathleen Benoit	62-36
Janis Buss	59-36

DONNA KIEDAISCH continues to lead the league with 15 points, followed by DELMA BURKHALTER with 7 - 1/2 and JANET POWER with 5.

GOLF LEAGUE

After three nights of play the standings of the leaders are as follows:

1. John Coffman & Maynard Blanchette	110 pts
2. Mel Boule' & Larry Power	102 pts
3. Earl Massey & Bob Faenger	101 pts
4. Tommy Brown & Oliver Miller	92 pts
5. Ron Tanner & Art Pepin	91 pts

In Tuesday's play, Low Team Net was captured by BROWN and MILLER, who had a sparkling 68. ERNIE PERKINS and ANDY RIVARD took second with 72. Third place was a tie at 73 between the teams of ALLIE-BLANCHETTE and MASSEY-CHESLA.

In individual competition, OSCAR MCKEEVER's 33 led the Class A golfers, while JAY KEROUAC, PERKINS and DON JENKINS had 35's. Class B leaders were, VERN WILLIAMS with 35, BILL HARTLEY and THURSTON JONES with 37's.

Low Gross honors in Class A were shared by BOULE' and KEROUAC, each of whom had 42. OLIVER MILLER had a 47 to lead Class B.

There were two birdies scored, one each by STEVE CHESLA and NICK GINERIS.

ROPER OUTDOOR PRODUCTS		BULK RATE U. S. POSTAGE PAID Bradley, Ill. 60915 Permit No. 29
BRADLEY PLANT BRADLEY, ILLINOIS 60915		
ADDRESS CORRECTION REQUESTED		
ARSENEAU A J RR #1 BOX 364 ST ANNE ILL		0428 2 60964