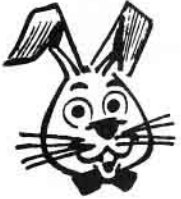


bradley News

Friday, April 16, 1976

The entire staff of the Roper Bradley News

wishes for all employees an enjoyable Easter Holiday.



Happy

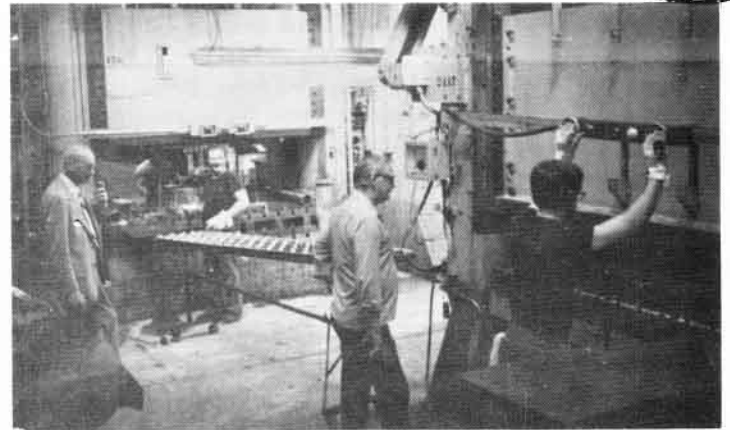
Easter



THE MAKING OF A TRACTOR

Since Production plays such a large part in the making of a tractor, we are using two pictures this week to illustrate two of the steps in this product. Here at this plant production generally can be said to fall into two main categories: the making of the fabricated parts that go into the tractor and the assembly of the tractor itself. All production at this location is under the overall supervision of Vice President of Manufacturing, MEL BOULE' and Production Mgr., JIM HUDSON.

All fabricated parts originate in Dept. 15 where steel comes in by truck, is sheared into blank size and then formed by many different presses. Pictured is a relatively new process involving two presses. In the picture JIM GOETZLER is operating the Bliss Press while BILL GIFFORD and EARL YEATES are operating the H.P.M. In the particular operation shown the three men are forming foot rests for the tractors. In the three man, two machine operation, GOETZLER on the Bliss is using two dies to blank out the pieces that then go by roller conveyor to the H.P.M. where GIFFORD forms the right and left foot rests which then go to YEATES, who splits them into the individual foot rests. In the picture Supt. EVERAL BRAULT and Foreman ART REPIN, in whose department the operation takes place, look on. In addition to the above described operation the same two machines can be and are used to run chassis channels, fenders, hoods and belt guards. MR. BRAULT has responsibility for the operations in D/10, D/15, D/15A, Heat Treat and Steel Stores.



PART VI PRODUCTION

The other picture in the Assembly area shows GARY BEAN on Line 1 preparing to mount the engine on a tractor while Supt. LOUIS STEFANICH and Foreman DWAYNE PFEFFINGER watch the operation.

From two to six weeks after material is brought into the fabricating departments, it has been put through numerous operations in several departments and has reached the Assembly lines, where it is painted and made ready for final assembly. There are at present, seven different tractors being assembled here, ranging from 10 to 16 horsepower models on two assembly lines capable of producing in excess of 300 tractors per day on a eight hour shift. Engines and rear tire wheel assembly are delivered to the line by an ingenious system of overhead conveyors. To produce tractors on final assembly it takes 48 employees and cycle time is under three minutes.

Each Tractor is 100% inspected. Faulty ones are set off in an area where skilled employees rework them to meet rigid quality control specifications. They again are put through inspection cells located at the ends of the lines to make sure that the finished product goes to the ultimate consumer with the highest degree of quality built in.

Superintendent STEFANICH is responsible for the operations not only in painting and assembly but also receiving and the machine shop.



OLD TIMER OF THE WEEK

This week's honored employee EVERAL BRAULT had a great mechanical background when he started to work at Bradley on April 5, 1956 at age 31. Starting when he was in high school, he spent over sixteen years in the automobile business as mechanic, service manager, parts manager and salesman at Hobson's in Clifton and Lang Buick in Kankakee. His first job here was in the Lab where his boss at that time was JIM HUDSON. Later after six months in Dispatching he went on Supervision as Foreman of the two paint lines and the Plater in 1962. This was followed by a stay as Foreman of Depts. 15 and 15A. In 1974 he was promoted to his present position of Division Superintendent.

During World War II, EVERAL had a very interesting career beginning in 1942 when he enlisted in the Navy at age 18. For almost three years he served on the brand new Battleship New Jersey, which was Admiral Halsey's flagship and logged 250,000 miles and seven major engagements in the Pacific. When the Japanese surrendered, Halsey, EVERAL and the New Jersey were all in Tokyo Bay.

EVERAL and his wife, Wanda, will be married 31 years in June and have two cats and a dog but no children. Mrs. BRAULT, a registered nurse, works for Doctor Drummond in Kankakee.

This great Old Timer, who is known as one of the better dressed men in the company, is a Citizen Band Radio buff, amateur photographer and loves to travel. He does all his own repair work on his home and car and that means literally everything; electrical, plumbing, heating, the works. The BRAULT'S live in Clifton.

BIRTH

Congratulations to GARY Dept. 35 and Christine MILLER on the birth of their second child, a boy, Jason Adam, born April 7, 1976.

NOBODY MISSES THE "5" PIN?

By Stan Butler

Everyone must have felt like bowling Monday night as there were eleven games in the 200's. DON BAYLOR 210-218-606, HARRIS 223-537, LAFOND 201-558, T. DUPUIS 203-554, CRAWFORD 204-537, DOERHING 200-536, J. FORBES 202-525, GARY ALBERS 208-529, BRINKMAN 202-530, PERKINS 203-520, ESSINGTON 516, BUTLER 512, and DANKEL 510.

There weren't very many splits recorded, but a few were, COURVILLE 3-7-10, W. DUPUIS 6-7, BUTLER 5-7, and GIBSON 5-10.

I don't know what happened to the "5" pin but it seemed very few people could hit it if it was the only one left. RON HIRT said he kept track all season and he only missed the "5" pin 27 times. Monday night the misses were HIRT, CONNOVER, MATHEWS, FISHER, GURZINSKI, GIBSON, PERKINS, GIERTZ and GALE ALBERS. Believe it or not, I had three shots at it and made them all.

Next week the Assembly, winners of the first half, and the Office, winners of the second half, will bowl to see who the Champions are for the season. The rest of us will bowl for sweepstakes.

CONGRATULATIONS

We congratulate Maint. Supt. WEBB KOHL, MYRNA RALPH, Dept. 35 and LORA TRUESDELL, Dept. 35 who were recent blood donors.

ROPER OUTDOOR PRODUCTS		BULK RATE U. S. POSTAGE PAID Bradley, Ill. 60915 Permit No. 29
BRADLEY PLANT		
BRADLEY, ILLINOIS 60915		
ADDRESS CORRECTION REQUESTED		
ARSENEAU A J		0428
RR #1 BOX 364		
ST ANNE ILL		60964