

# bradley News

Friday, April 9, 1976

## THE MAKING OF A TRACTOR PART V PURCHASING



The average employee working on the tractor line probably has no idea how many people are involved in the overall picture that eventually results in the manufacture and sale of a tractor. The Purchasing Department is one of the most important cogs in the entire operation. Headed up by Vice President of Purchasing, H.L. KARLSTROM with MAYNARD BLANCHETTE as Purchasing Agent, the tractor buyers, shown in the picture, using the phone to expedite deliveries, are Buyer, LARRY POWER and Assistant Buyer, BARB LECLAIR. In the entire department there are nine buyers and eleven non exempt personnel.

It is interesting to note that Purchasing buys about 6000 different parts from over 500 suppliers, the majority of which are, for tractor manufacturing. In 1974, this plant spent \$9,609,000 for steel representing over 30,000 tons. In addition to our own plant, the purchasing is also done here for the plants at Williamsburg, Nogales and Moto-Mower in Canada.

With parts coming in every day, practically all by truck, it is easy to understand that the biggest single headache in the department is getting delivery on schedule. When a crisis occurs, like the recent trucking strike, it is easy to see that it plays havoc not only with the purchasing function, but with the entire plant operation.

A typical day in the Purchasing Department sees the buyers interviewing salesmen and using the phone to place orders and coordinate deliveries. In addition, conference meetings are held daily with representatives of engineering, inspection, sales and production.

**DON'T FORGET WEDNESDAY, APRIL 14TH, THE SHOEMOBILE WILL BE HERE FROM 8 A.M. TO 5 P.M.**

## NOBODY MISSES THE "5" PIN?

By Stan Butler

We only have two more nights of bowling, one position night and sweepstakes. Then our banquet will be the 30th at the boat club.

It seems I can't get by missing the "5" pin. As soon as I miss the - - - thing someone is yelling to be sure and put it in the paper.

There were only 2 splits recorded on the sheets and they were CRAWFORD 4-7-9 and T. DUPUIS 5-7. But we had five 200 or better games and 13 500 or better series.

LEROY MATHEWS had 236-541, T. DUPUIS 230-539, BLANCHETTE 202-544, GARY ALBERS 201-592, ESSINGTON 201-529, BUTLER 547, MCQUILLAN 517, PERKINS 514, BAYLOR 511, PECCANINO 510, HAMPTON 509, LAFOND 506 and GURZINSKI 504.

The Office has won the second half and will therefore have to bowl the Assembly who won the first half to see who gets first and who gets 2nd.

## MAIL DELIVERY

For those employees who have been getting their Roper Bradley News at irregular intervals lately a word of explanation might be in order. Years ago the publication date of the paper was every Friday and each week the newspapers were placed in the canteen areas on that day to be picked up by the employees. Then four years ago it was decided that instead of distributing them here in the plant they would be mailed to the employee's homes.

Each week we finish writing the current weeks edition and deliver it to the Print Shop on Wednesday, where it is printed, folded and returned to the Personnel Office usually no later than Friday morning. It then has to have mailing labels affixed, stapled and sorted and counted and taken to SAM COFFMAN'S office to be mailed out. Unless something goes wrong they are picked up by the Post Office Friday afternoon and returned there for delivery. Most employees who live in Bradley regularly get their papers on Saturday, but all others are sent to the Kankakee Post Office to be sent out to the other post offices involved and the delays can be any place along the line. As we are writing this it is Monday and we didn't get our last Friday's paper yet. Still it went out of the factory Friday. So I guess all we can do is be patient in the knowledge that it will eventually arrive. With a holiday next week we will hope its not too bad.

## LADIES GOLF

After a lapse of several years the Roper Ladies have decided to take to the links again and have organized a golf league. Officers have been elected and play will start Tuesday, April 27th continuing for sixteen weeks. It appears as we go to press that the league will play at Shamrock Golf Course and start at 5:00 p.m. each week.

League officers are as follows:

JANET POWER, President, KATHY DUPUIS, Handicapper, MARY FRINK and JANIS BUSS, Rules Committee.

In addition to the officers the following have signed up to play.

Kathleen Benoit	Etha Bowers
Delma Burkhalter	Harriet Harwood
Donna Kiedaisch	Carol Rabideau
Cecilia Seamark	Nancy Walker

## MENS GOLF LEAGUE

League Secretary, RON TANNER, has released the names of the teams who will compete in the 1976 golf league. The league play will start on Tuesday, April 27th at South Shore golf course. RON says all rules and additional information will be distributed to the players within the next 10 days.

The complete roster of teams is as follows:

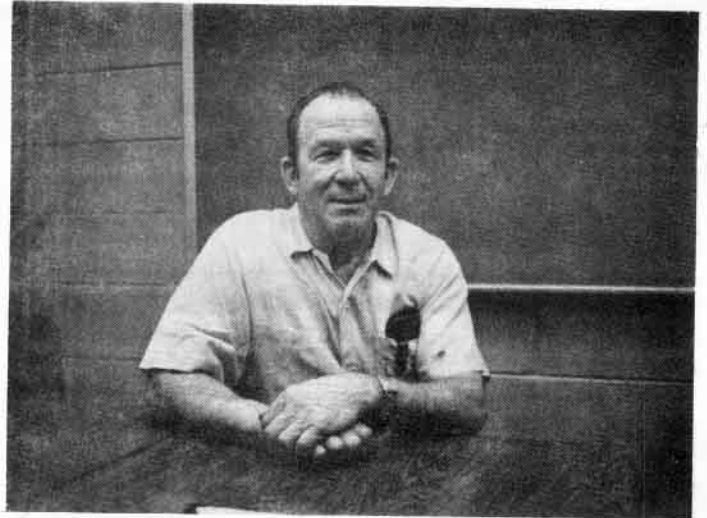
TEAM NO.	"A" PLAYER	"B" PLAYER
1	Leo Williamson	Elwood Weiske
2	Earl Massey	Bob Faenger
3	John Coffman	Maynard Blanchette
4	Steve Serve	Gary Kinney
5	Nick Gineris	Bill Woods
6	Rol Schlemmer	Thurston Jones
7	Joe Dominiak	Bob Bell
8	Ray Daughenbaugh	Orrin Kinney
9	Doug Dankel	Gus LaRoche
10	Mel Boule	Larry Power
11	Bob Crawford	Bill Lustik
12	Pat McKeever	Walt Bishop
13	Mike Puffer	Vern Williams
14	Pete Johnson	Gene Seamark
15	Lee Herscher	Bill Hartley
16	Don Jenkins	Harold Sage
17	Ernie Perkins	Andy Rivard
18	Chuck Hanners	Leon Kohan
19	George Bingley	Henry Bittman
20	Del Fuhrman	Bob Williamson
21	Tommy Brown	Oliver Miller
22	Wayne Rasmussen	Myron Moody
23	Willard Nelson	Pete Geraci
24	Ron Tanner	Art Pepin

We extend sincere sympathy to ART BURROW, Gen. Foreman D/15, and DEBORAH BURROW, D/35 on the death of their mother-in-law and grandmother respectively.

Also to MERLE ARSENEAU, D/25 Foreman, on the death of his father-in-law.

And we extend sincere sympathy to the family of Retiree, ELMER RIECK who passed away last week and especially to his brother EVERETT, D/91.

## OLD TIMER OF THE WEEK



This week's honored employee is FRANK OVNICH who started his career here at Bradley on March 9, 1944. But unlike most of our Old Timers FRANK was almost 30 years old and had already worked in a coal mine, managed a country estate near Chicago and worked in a defense plant making munitions. His first assignment here was on the Shell Line followed by a stay in Assembly, the Blacksmith Shop and then seventeen years in Furniture. When furniture production stopped he returned to Assembly where he is currently spraying on the Paint Line.

FRANK and his wife Margareta will celebrate 40 yrs. of married life this June. They have one son Jonathan who formerly worked here on the tractor line and now is an automobile painter at American Custom on Route 102. Mrs. Ovnich is employed by the Bergerons as secretary to Ed and Clarence Bergeron. This old timer for many years had a TV Antenna business which he recently gave up. He has always been a great traveler and prior to 1970, when we wrote about him before, he had visited the entire U.S. including Hawaii. He has since taken a Mediterranean cruise, revisited Nassau and won a big jack pot at Vegas. In fact he is such a traveler that in the last three years he has moved from 695 So. Wildwood, to 965 So. Elm, to 421 So. Nelson to 267 So. Chicago all in Kankakee. FRANK has just passed his 61st birthday and one of these days will probably be thinking of retirement.

**ROPER OUTDOOR PRODUCTS**

**BRADLEY PLANT**

**BRADLEY, ILLINOIS 60915**

ADDRESS CORRECTION REQUESTED

**BULK RATE**  
U. S. POSTAGE  
**PAID**

Bradley, Ill. 60915  
Permit No. 29

ARSENEAU A J  
RR #1 BOX 364  
ST ANNE ILL

0428 2

60964