

bradley News

Friday, January 30, 1976

JOB OPENING

Since there are still people on layoff, we feel this job opening should be made available to all employees laid off or working, who qualify.

There is an opening for one Tool & Die apprentice. The starting rate of pay is \$4.60 per hour. This is a four year training program. Qualifications for the apprenticeship are listed below.

"QUALIFICATIONS FOR APPRENTICESHIP APPLICANTS"

Apprenticeship applicants, before being accepted as apprentices must be able to meet the following requirements:

- a. Employee of the company
- b. High school graduate or certificate of equivalency.
- c. Physical fitness for the work of the trade.
- d. American citizen or in the process of naturalization.
- e. Apprentices shall be required to furnish necessary tools, as determined by the Joint Committee, for each stage of their training.
- f. Selection of apprentices under this program shall be made from qualified applicants on the basis of merit alone and without regard to race, creed, color, natural origin, sex or physical handicap in accordance with objective standards which permit review, after full and fair opportunity for application; and this program shall be operated on a complete nondiscriminatory basis.

Military Service time will be credited to the individual.

Anyone who is qualified for the above mentioned job opening must personally sign a request to transfer by Friday, February 6, 1976 at the Employment Office. Ability and seniority will prevail in filling this opening.

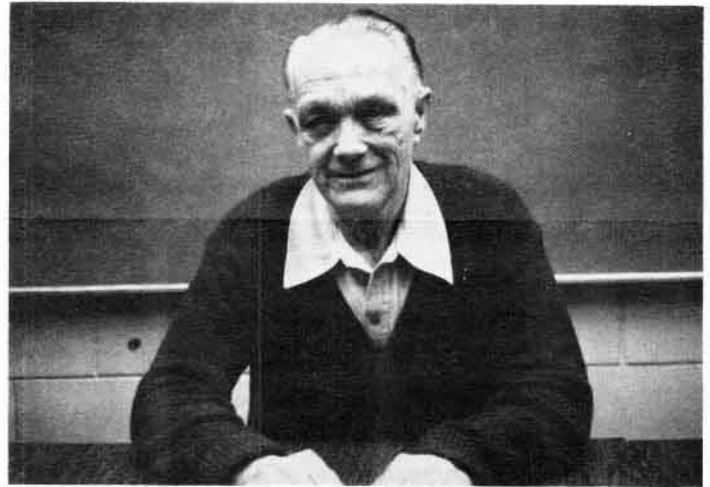
"NOBODY MISSES THE "5" PIN?"

As of last Monday night the Maintenance team only has one way to go as they are on the bottom of the list point wise.

The following good games and series from Monday night are CHUCK BRINKMAN 207, BOB CRAWFORD 213-527, TERRY DUPUIS 203-563, DON BLANCHETTE 203-510, JOHN BELL 201-532, TONY STANISEZESKI 200-533, RON HIRT 567, RAY MCNASH 538, RALPH DOERHING 522, DAN LAFOND 519, Y FORBES 503, SAM RAIMONDO 502 and STAN BUTLER

.J.

There were a few splits recorded on the top of the sheets and here they are: TONY STANISEZESKI 2-4-10, RAY MCNASH 5-8-10, LOU CONNOVER 4-7-9, and WILL ESSINGTON 4-7-9.



RETIREE

February 1 is the official date of retirement for CLARENCE STUMP, who will be 64 later on in the month and has over 34 years of service. CLARENCE, who has not worked since October because of a problem with his heart, says he is feeling better, but doesn't plan much activity until the weather gets warmer. At that time he plans some fishing and travel, and maybe later a little hunting if he is up to it. Until then he plans only to rest at 442 No. Wabash and watch the sports programs on T.V.

CLARENCE, who for the past many years has been a Leadman Fork Lift Operator, says he has for the most part enjoyed his years at Bradley and Roper. We wish him a very enjoyable retirement.



"Don't blame my talking . . . they can't understand a word I say!"

G.E.D. STUDIES

We have noticed by our personnel records that many of our employees do not have high school diplomas. Those who have not should be very interested in the following:

Dr. John R. Samlin, Kankakee Community College President has announced that the college, in cooperation with Cable TV, Channel 6, will sponsor a new series of programs called "Prepare for Your G.E.D. by Watching Cable Six TV" (and or WTTW, Channel 11).

Since fifty-five percent of the people in Kankakee County over the age of 25 do not have a high school diploma, Kankakee Community College is making this series available as part of its continuing commitment to community service.

The half-hour programs will be shown beginning Tuesday, February 3, three times a day, 10 a.m., 2 p.m. and 6 p.m. on Channel 6. The series will run on Tuesdays and Thursdays. The same tape will be shown three times on Tuesday. A new tape will be shown 3 times on Thursdays. This system will run for 17 consecutive weeks for a total of 34 tapes in the series.

The revolutionary videotape skills program, developed by Kentucky Educational Television (KET) and the Cambridge Book Company, is in color. Animation theatrical sketches and drama are utilized in the series not just to make the learning fun but to illustrate the information as graphically and effectively as possible. Some of the lessons have been filmed in outdoor settings, while other sequences have used the resources of the KET studios. Lively, often humorous, always interesting episodes in contemporary presentations enhance the serious purpose and structure of the programs. Persons interested in watching the programs on a regular basis in preparation for the General Education Development GED tests are urged to register with the Continuing Education office on the KCC campus. Registration is free. There are no tuition costs for the individual, and in addition he will be given three TV Study Guides published by the Cambridge Book Company.

The TV Study Guides parallel each half-hour tape. Each lesson includes introductory material to be read by the student. Objectives for the unit are clearly stated so students know just what they will be learning. Vocabulary follows, with each word and phrase carefully defined and explained. Exercises are done concurrently with viewing. Reading ability and comprehension are reinforced by passages to be read by the viewer with the narrator. Additional reviews and post-viewing practice exercises complete each section. Answers and explanations are given for each exercise.

In addition to the tapes shown on Channel 6 TV, WTTW, Chicago, (Channel 11) will be showing the identical series on Saturdays from 12 noon to 1 p.m. Thus, if an individual misses the Tuesday and Thursday Channel 6 showings, he could still catch up on Saturday. Or if local residents do not have Cable TV, they may still enroll and participate by watching the Saturday programs.

KCC has also established a "hot line" telephone extension on the campus (933-9311 ext. 210) to answer questions that develop during this registration period and throughout the television series. This referral service can put an individual in touch with an instructor who will assist him with a particular problem area of study, or simply answer questions about the programming.

An individual must be 19 years of age to take the GED tests, but persons 18 years of age and over may register and begin their study program. Residents of this area register for the GED tests through the office of Richard Skinner, Kankakee County Regional Superintendent of Schools, 187 So. Schuyler, Room 303. The tests are administered on the KCC campus.

Registrations for the TV series and the free study guides are being accepted now on the KCC campus, in the Continuing Education Office, Monday through Friday, 8 a.m. to 5 p.m.



OLD TIMER OF THE WEEK

This week's honored employee is TOM ROE, who started his Bradley career on December 16, 1942. Although he was only eighteen at the time he had already spent several months in Seattle working for the Boeing Aircraft Plant. He started here in Steel Stores, then went to Receiving for several years. He then transferred to Material Control and eventually went into Purchasing as an expeditor. In 1966 he was promoted to exempt status as a Buyer which is his present job. He has bought for tractors and chain saws, and, at the present time, purchases for everything made in Williamsburg and for the patio Grills and Spaders here.

In World War II TOM spent 2½ years as an Army Engineer and spent 2 years in the China, Burma, India theatre of operations. His job was laying pipelines on the famous Burma Road. His rank at discharge was Corporal.

Three years ago after his first marriage ended in divorce TOM and his wife MADELINE, who had a similar experience, were married. MADELINE was then and still is employed by Material Control. While he had no children he feels about MADELINE'S four as if they were his own. Diane lives with the ROE'S, Patty O'Hearn lives in Bradley, Michael is a junior at Illinois State U. and Mark has just finished Navy boot training at Great Lakes.

This Old Timer is an avid fisherman and spends a lot of time indulging his hobby both here and up north. He says he has enjoyed his 33 years at Bradley especially the associations and friendships he has made.

ROPER OUTDOOR PRODUCTS

BRADLEY PLANT

BRADLEY, ILLINOIS 60915

**BULK RATE
U. S. POSTAGE
PAID**

Bradley, Ill. 60915
Permit No. 29

ADDRESS CORRECTION REQUESTED

ARSENEAU A J
RR #1 BOX 364
ST ANNE ILL

0428

60964